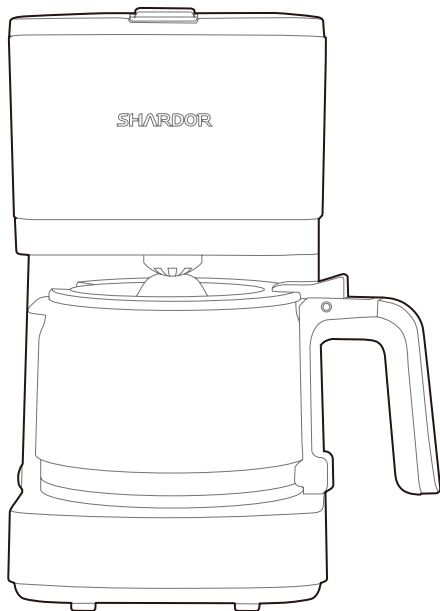


SHARDOR



CM616B | Coffee Maker

USER MANUAL

CONTENTS

■ Important Safety Instructions	1
■ Parts Identification	2
■ Specification	3
■ Using Your Coffee Maker	3
■ Cleaning and Maintenance	4
■ Removing Mineral Deposits	4
■ Hints for Great-tasting Coffee	4
■ Disposal	5
■ Warranty	5
■ Customer Service	7

Important Safety Instructions

SAVE THESE INSTRUCTIONS HOUSEHOLD USE ONLY

When using electrical appliance. Basic safety precautions should always be followed including the following:

1. Read all instructions.
2. Make sure that your outlet voltage corresponds to the voltage stated on the rating label of the coffee maker.
3. To protect against fire, electric shock and injury to persons do not immerse cord, plug, or unit in water or other liquid.
4. Close supervision is necessary when any appliance is used by or near children.
5. Unplug from outlet when either the appliance or display clock is not in use, and before cleaning. Allow to cool before putting on or taking off parts, and before cleaning the appliance.
6. Do not operate any appliance with a damaged cord or plug or after the appliance malfunctions, or has been damaged in any manner. Return appliance to an authorized service facility for examination, repair or adjustment.
7. The use of accessory not recommended by the appliance manufacturer may result in fire, electric shock or injury to persons.
8. Do not use outdoors.
9. Do not let cord hang over edge of table or counter, or touch hot surface.
10. Do not place on or near a hot gas or electric burner, or in a heated oven.
11. Do not use appliance for other than intended use.
12. Do not clean container with cleansers, steel wool pads, or other abrasive material.
13. Always attach plug to appliance first, then plug cord into the wall outlet. To disconnect, turn any control to "Off", remove plug from wall outlet. Always hold the plug. But never pull the cord.
14. Scalding may occur if the cover is removed during the brewing cycles. Be careful not to get burned by the steam.
15. Some parts of appliance are hot when operated, so do not touch with hand. Use handles or knobs only.

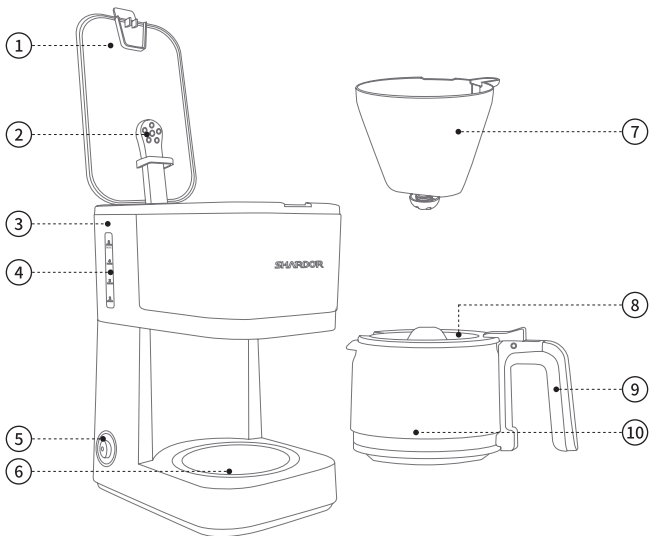
16. Never leave the empty carafe on the warming plate otherwise the carafe is liable to crack.
17. Never use the appliance if the carafe shows any signs of cracks or carafe having a loose or weakened handle. Only use the carafe with this appliance. Use carefully as the carafe is very fragile.
18. This appliance is not intended for used by persons (including children) with reduced physical, sensory or mental capabilities, or lack of experience and knowledge, unless they have been given supervision or instruction concerning use of the appliances by a person responsible for their safety.
19. Children should be supervised to ensure that they do not play with the appliance.
20. Do not set a hot container on a hot or cold surface.
21. Do not let the coffee maker operate without water.
22. Do not touch hot surfaces. Use handles or knobs.
23. Do not use a cracked container or a container having a loose or weakened handle.
24. The container is designed for use with this appliance. It must never be used on a range top.
25. To reduce the risk of fire or electric shock, do not remove the bottom cover. No user-serviceable parts inside. Repair should be done by authorized service personnel only.
26. There is the potential injury from misuse
27. Be care of the residual heat of heating element after use.
28. To reduce the risk of electric shock, cook only in removable container.

Notes on the cord plug

Note: This appliance has a polarized plug, To reduce the risk of electric shock, this plug is intended to fit into a polarized outlet only one way, If the plug does not fit fully into the outlet, reverse the plug, If it still does not fit, contact a qualified electrician, Do not attempt to modify the plug in any way.

1. short power-supply cord (or detachable power-supply cord) is provided to reduce risks resulting from becoming entangled in or tripping over a longer cord.
2. Longer detachable power-supply cords or extension cords are available and may be used if care is exercised in their use.
3. If a long detachable power-supply cord or extension cord is used:
The marked electrical rating of the detachable power-supply cord or extension cord should be at least as great as the electrical rating of the appliance;
If the appliance is of the grounded type, the extension cord should be a grounding type 3-wire cord;
The longer cord should be arranged so that it will not drape over the counter top or table top where it can be pulled on by children or tripped over.

Parts Identification



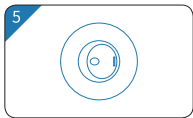
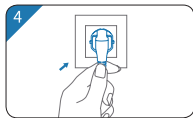
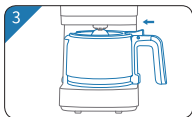
①	Water Tank Cover
③	Water Gauge
⑤	Switch
⑦	Funnel
⑨	Handle

②	Sprayer
④	Water Gauge
⑥	Keeping Warm Plate
⑧	Carafe Lid
⑩	Glass Carafe

Specification

Model	CM616B
Power Supply	120V, 60HZ
Power	600W
Net Weight	1.2kg
Dimension	5.5x8.2x10inch

Using Your Coffee Maker



NOTE: Check that all accessories are complete and the unit is not damaged. Add water into water tank to the MAX level of water gauge and brew water for several times without coffee powder, then discard the water. Clean all detachable parts thoroughly with warm water.

1. Open the water tank cover and fill the water tank with fresh water. The water level should not exceed MAX level as indicated on the water level gauge.
2. Add coffee powder into filter. Usually a cup of coffee need a level spoon of coffee powder, but you may adjust according to personal taste. Then assemble the filter with coffee powder into the funnel, and make sure the funnel is fitted properly, otherwise the top cover can not be closed. Finally, close the water tank cover.
3. Insert the carafe on the warming plate horizontally.
4. Plug the power cord into the outlet.
5. Press ON/OFF switch to the "I" position, the indicator will be illuminated. The appliance will begin working.

6. The brewing process can be interrupted by pressing ON/OFF switch to the "O" position at any time. The appliance will continue brewing once the ON/OFF switch is pressed to the "I" position.

Note: You can take out carafe, pour and serve at any time. The appliance will stop dripping automatically. But the time cannot exceed 30 seconds.

Caution: DO NOT touch cover, warming plate and so on when operating as they are very hot.

REMIND:

1. When the process is finished, if you do not want to serve immediately, keep the coffee maker is energized, the coffee can be kept warm in the warming plate. For an optimum coffee taste, serve it just after brewing.

Note: Please make sure the carafe is not empty when keeping warm to avoid dry boiling.

2. Remove out carafe to serve when finish brewing (about one minute later after the coffee stops dripping out.)

Note: The coffee you get will less than the water you have added, as some water is absorbed by coffee powder. DO NOT touch cover, warming plate and so on when operating as they are very hot.

3. Always turn the coffee maker off and disconnect the power supply when not use.

Note: Pay attention to pour the coffee out, otherwise you may be hurt as the temperature of coffee just finished is high.

Cleaning and Maintenance

CAUTION:

Be sure to unplug this appliance before cleaning. To protect against electrical shock, do not immerse cord, plug or unit in water or liquid. After each use, always make sure plug is first removed from wall outlet.

1. Clean all detachable parts after each use in hot, sudsy water.
2. Wipe the product's exterior surface with a soft, damp cloth to remove stains.
3. Water droplets may buildup in the area above the funnel and drip onto the product base during brewing. To control the dripping, wipe off the area with a clean, dry cloth after each use of the product.
4. Use a damp cloth to gently wipe the warming plate. Never use abrasive cleaner to clean it.
5. Replace all parts and keep for next use.
6. Any other servicing should be performed by an authorized service representative.

Removing Mineral Deposits

To keep your coffee maker operating efficiently, you should clean away the mineral deposits left by the water regularly according to the water quality in your area and the frequency use the appliance, the detail is as follows:

1. Fill the water tank with water and descaler to the MAX level as indicated in the water tank. (The scale of water and descaler is 4:1, the detail refers to the instruction of descaler. Please use "household descaler", you can use the citric acid instead of the descaler (the one hundred parts of water and three parts of citric acid).
2. Put the carafe on the warming plate and ensure it is placed in position.
3. Press the ON/OFF button once and the indicator of RUN will be illuminated. After a while, water will drop out automatically.
4. After percolate the equivalent of one cup and then switch off the appliance by pressing the ON/OFF button again.
5. Leave the solution work for 15 minutes. Repeat the steps of 3-5 again.
6. Turn the appliance on by pressing the ON/OFF button once and run off the water until the water tank is completely empty.
7. Rinse by operating the appliance with water at least 3 times.
8. Then brewing coffee (no coffee powder) with tap water, repeat the steps of 4-6 for 3 times (it is not necessary to wait 15 minutes in step of 6), then brewing until no water is left in the tank.

Hints for Great-tasting Coffee

1. A clean coffee maker is essential for making great-tasting coffee. Regularly clean the coffee maker as specified in the “CLEANING AND MAINTENANCE” section. Always use fresh, cold water in the coffee maker.
2. Store unused coffee powder in a cool, dry place. After opening a package of coffee powder, reseal it tightly and store it in a refrigerator to maintain its freshness.
3. For an optimum coffee taste, buy whole coffee beans and finely grind them just before brewing.
4. Do not reuse coffee powder since this will greatly reduce the coffee’s flavor. Reheating coffee is not recommended as coffee is at its peak flavor immediately after brewing.
5. Clean the coffee maker when over-extraction causes oiliness. Small oil droplets on the surface of brewed, black coffee are due to the extraction of oil from the coffee powder.
6. Oiliness may occur more frequently if heavily roasted coffees are used.

Disposal

This product should not be disposed of with other household wastes. To prevent possible harm to the environment or human health from uncontrolled waste disposal, you should recycle it responsibly to promote the sustainable reuse of material resources. Please use the return and collection systems or contact the retailer where the product was purchased to dispose of your used product. They can take this product for environmentally safe recycling.

Warranty

Limited 2-year Warranty. We warrant this product against any defects that are due to faulty material or workmanship for the life of the product. This warranty does not include damage to the product resulting from accident or misuse. If the product should become defective within the warranty period, we will replace it free of charge.

Please contact us and attach the sales receipt with your name, address, phone number and order number. For contacting us, please see the Customer Service Section. We will be happy with your service.

This warranty does not cover products damaged by the following:

1. Accident, misuse, abuse or alteration of the product.
2. Servicing by unauthorized persons.
3. Use with unauthorized accessories.
4. Connecting it to incorrect current and voltage.
5. Wrapping cord around appliance causing premature wear and breakage.
6. Any other conditions beyond our control.

Customer Service

For FAQ and more information, please contact us. We are glad to assist you.

After-sale Email: warranty@shardor1.com