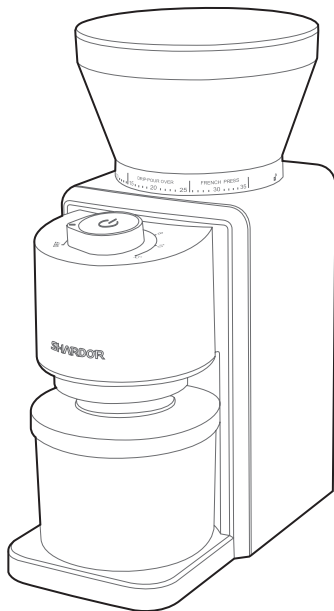


SHARDOR



CG855B | Coffee Grinder

USER MANUAL

CONTENTS

■ Important Safeguards	1
■ Warning	2
■ Specification	2
■ Know Your Coffee Grinder	3
■ Assembly	4
■ Setting and Running The Grinder	5
■ Grind Settings	6
■ Troubleshooting	6
■ Care and Cleaning	7
■ Disposal	8
■ Warranty	8
■ Customer Service	9

Important Safeguards

Before using the electrical appliance, the following basic precautions should always be followed including the following:

1. Read all instructions.
2. Before using please check that the voltage of wall outlet correspond to the one shown on the rating plate.
3. Do not operate any appliance with a damaged cord or plug or after the appliance malfunctions, or is dropped or damaged in any manner. Return appliance to the nearest authorized service facility for examination, repair or electrical or mechanical adjustment.
4. Switch off the appliance and disconnect from supply before changing accessories or approaching parts that move in use.
5. Do not let cord hang over edge of table or hot surface.
6. Do not immerse the motorized base in liquid, or place in dishwasher.
7. Close supervision is necessary when your appliance is being used near children or infirm persons.
8. Ensure fingers are kept well away from the moving parts.
9. Do not remove the lid until the blade has completely stopped.
10. Do not attempt operation without the lid being in place.
11. The use of attachments not recommended or sold by the manufacturer may cause fire, electric shock or injury.
12. Check the Bean Hopper for the presence of any foreign objects before using.
13. To protect against risk of electrical shock, do not put the Coffee Grinder in water or other liquid.
14. Appliance can be used by persons with reduced physical, sensory or mental capabilities or lack of experience and knowledge if they have been given supervision or instruction concerning use of the appliance in a safe way and understand the hazards involved.
15. Children shall not play with the appliance.
16. This appliance shall not be used by children. Keep the appliance and its cord out of reach of children.
17. Misuse may cause potential injury.
18. Care shall be taken when handling the sharp cutting blades and during cleaning.
19. Turn the appliance OFF, then unplug from the outlet when not in use, before assembling or disassembling parts and before cleaning. To unplug, grasp the plug and pull from the outlet. Never pull from the power cord.

20. Make sure appliance is OFF when not in use, before putting on or taking off parts, and before cleaning.
21. Avoid contacting moving parts.
22. Do not operate the appliance for other than its intended use.
23. Do not use outdoors.

Warning

To reduce the risk of fire or electric shock, do not remove any service covers. There are no user serviceable parts inside the Conical Burr.

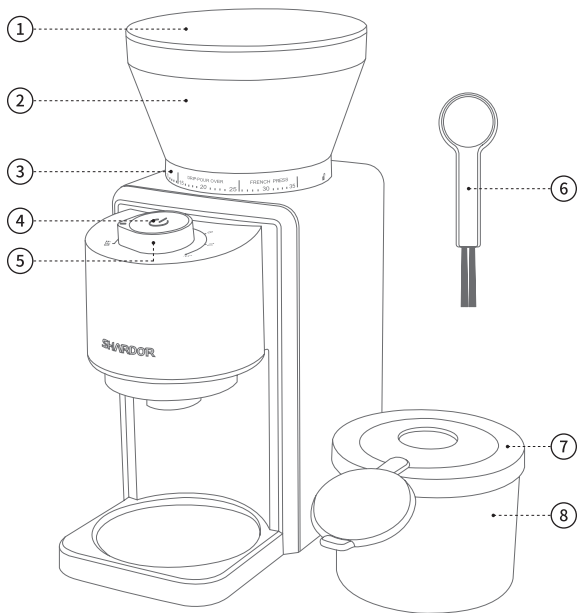
Only authorized personnel should repair the Conical Burr.

Please read ALL of the instructions in this manual carefully before you begin to use this appliance. Proper care and maintenance will ensure a long life and a trouble-free operation for this appliance. Please save these instructions and refer to them for cleaning and care tips.

Specification

Model	CG855B
Rated Voltage	AC120V
Rated Frequency	60Hz
Rated Power	200W
Bean Hopper Capacity	8.46oz
Grinding Chamber Capacity	4.58oz
Net Weight	4.5 pounds
Dimensions	7.87×4.72×11.81inch

Know Your Coffee Grinder

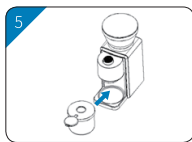


NOTE: The cleaning brush can be only used for cleaning the appliance after use.

- ① Bean Hopper Lid
- ③ Grinding Settings
- ⑤ Cup Selector
- ⑦ Grinding Chamber Lid

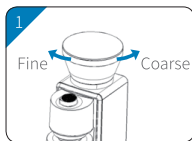
- ② Bean Hopper
- ④ On/Off Button
- ⑥ Cleaning Brush
- ⑧ Grinding Chamber

Assembly



1. Install the Bean Hopper into the correct position of the appliance.
Make the positioning ribs at the Bean Hopper align with the grooves at the main body. The Bean Hopper can be removed when the icon "▼" at the Bean Hopper aligns with the icon "🔒".
2. Rotate the Bean Hopper clockwise to lock it, and then the grind size can be adjusted.
3. Open the lid, add the beans and cover the lid.
4. Rotate the bean hopper clockwise to get finer ground. Rotate the bean hopper anticlockwise to get more coarse coffee ground.
5. Remove the sealing cover and place the chamber into correct position.

Setting and Running The Grinder



1. Plug into a power outlet.
Rotate the Bean Hopper to select the grind size ranging from 1 (Fine) to 35 (Coarse). Refer to the "Coffee Grind Chart".
2. Rotate the Grinding Selector to select the number of cups or shots (rotate clockwise to increase; rotate counterclockwise to decrease).
3. Press On button and select the grinding size and cups. Grinder will stop automatically if it finishes work.
4. Pause the Coffee Grinder by pressing the OFF button.
5. Turn the Grinding Selector to OFF after grinding is done.

TIP:

Refer to the "Coffee Grind Setting chart" for preset settings. Experiment with the different grind size, dose and time settings to achieve your desired taste.

WARNING:

Do not operate this appliance for longer than 3 minutes at a time as this can cause overheating. Please allow the appliance to cool down 30 minutes if it works over 3 minutes.

Grind Settings

Brew Type	French Press	Drip Coffee Maker	Espresso Machine
Ground Size	Coarse	Medium	Fine
Cup Selection	2-12 Cup	2-12 Cup	2-12 Cup
Maximum Grinding Time	55S (12 cup)	55S (12 cup)	55S (12 cup)

Troubleshooting

Problem	Possible Cause	Solution
Grinder does not work	Grinder not plugged in	Plug power
	Bean hopper or chamber not attached properly	Gently remove and re-install bean hopper or chamber ensuring it is seated properly
	Grinder overheated	Cool down the grinder for 30 minutes if it works for 3 minutes.
Grinder stops mid-cycle	No beans in hopper	Fill hopper with fresh coffee beans
	Foreign item trapped in burrs	Unplug power cord and remove hopper. Inspect hopper, clean the burrs. Remove any foreign objects. Refer to Care and Cleaning section
	Grounds chute is clogged	Unplug power cord and remove hopper. Clean grounds chute with brush

Please contact our after-sales team at warranty@shardor1.com if the solutions is not helpful for you.

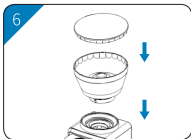
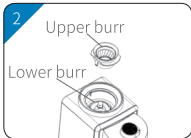
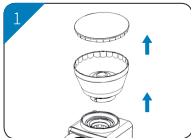
Care and Cleaning



1. The Bean Hopper, Bean Hopper Lid, Grinding Chamber and Grinding Chamber Lid can be cleaned with warm, soapy water, then rinse with clean water and dry thoroughly.
2. Wipe the main body of Coffee Grinder with a soft and damp cloth and dry it with a soft dry cloth.

Cleaning The Burrs

It is recommended to clean out the coffee bean hopper after every few uses for keeping best grinding effect and best performance.



1. Empty the Bean Hopper. Remove the lid and the Bean Hopper.
2. Remove the upper burr.
3. Clean the upper burr with the cleaning brush.
4. Clean the lower burr with the cleaning brush to remove coffee residue.
5. Install the upper burr in correct position.
6. Install the bean hopper and bean lid in correct position.

Disposal

This product should not be disposed of with other household wastes. To prevent possible harm to the environment or human health from uncontrollable waste disposal, it should be recycled responsibly.

Warranty

Limited 2-year Warranty

We warrant this product against any defects that are due to faulty material or workmanship of it. This warranty does not include accident or misuse. If the product gets defective within the warranty period, we will replace it free of charge.

Please contact us and attach the sales receipt with your name, address, phone number and order number. Contacting us we will be happy service for you.

This warranty does not include the following situation:

1. Accident, misuse, abuse or alteration of the product.
2. Servicing by unauthorized persons.
3. Use with unauthorized accessories.
4. Connecting it to incorrect current and voltage.
5. Wrapping cord around appliance causing premature wear and breakage.
6. Any other conditions beyond our control.

Customer Service

For FAQ and more information, please contact us. We are glad to be of service.

After-sale Email: warranty@shardor1.com