

SHARDOR



TA1729B-UL | Toaster

USER MANUAL

CONTENTS

■ Important Safeguards	1
■ Specification	2
■ Know Your Toaster	3
■ Features and Benefits	4
■ Use and Care	5
■ Cleaning and Maintenance	7
■ Disposal	7
■ Warranty	8
■ Customer Service	8

Important Safeguards

When using an electrical appliance, basic safety precautions should always be taken, including the following:

1. Read all instructions.
2. Always unplug from outlet when not in use and before cleaning. Allow to cool before cleaning or handling.
3. Do not touch hot surfaces. Use handles or lever.
4. To protect against electrical shock, do not place any part of the toaster in water or other liquids. See instructions for cleaning.
5. This appliance should not be used by or near children, or individuals with certain disabilities.
6. Do not operate any appliance with a damaged cord or plug, or after the appliance has malfunctioned or has been dropped or damaged in any way, or if it is not operating properly. Return the toaster to the store or retailer where purchased for examination or repair.
7. The use of accessory attachments not recommended may cause injury.
8. Do not use outdoors.
9. Do not let cord hang over the edge of the table or countertop or touch hot surfaces.
10. Do not place toaster on or near a hot gas or electric burner or in a heated oven.
11. Do not use this toaster for other than its intended use.
12. Oversize foods, metal foil packages or utensils must not be inserted in the toaster, as they may involve a risk of fire or electric shock.
13. A fire may occur if the toaster is covered or touching flammable materials, such as curtains, draperies or walls, when in operation. Do not operate under wall cabinets.
14. Do not attempt to dislodge food when the toaster is plugged into electrical outlet.
15. To avoid possibility of fire, do not leave toaster unattended during use.
16. To disconnect, push the Cancel button, then remove plug from wall.
17. Do not operate your appliance in an appliance garage or under a wall cabinet. When storing in an appliance garage, always unplug the unit from the electrical outlet. Not doing so could create a risk of fire, especially if the appliance touches the walls of the garage or the door touches the unit as it closes.

Save these instructions for household use only special cord set instructions

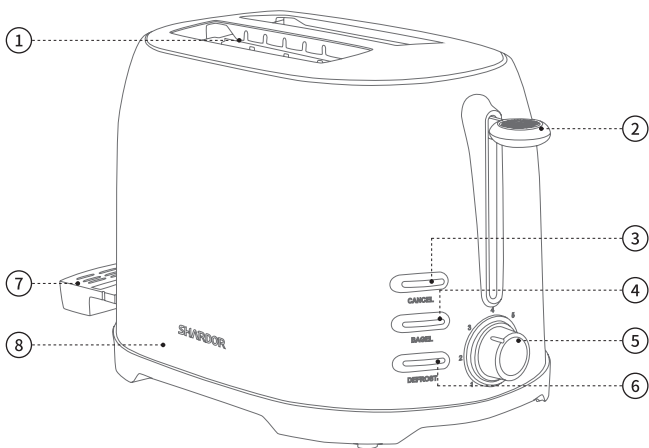
A short power-supply cord is provided to reduce the risks resulting from becoming entangled in or tripping over a longer cord. Longer extension cords are available and may be used if care is exercised in their use.

If a long extension cord is used, the marked electrical rating of the extension cord should be at least as great as the electrical rating of the appliance, and the longer cord should be arranged so that it will not drape over the countertop or tabletop where it can be pulled on by children or tripped over.

Specification

Model	TA1729B-UL
Rated Power	800W
Rated Voltage	120V
Material	Stainless Steel
Toasting Slots width	1½-inch(36mm)
Dimensions	12.5x7.4x8.5in

Know Your Toaster



① Dual Toasting Slots

③ Cancel Button

⑤ Browning Control

⑦ Slide-out Crumb Tray

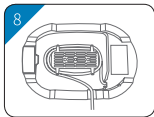
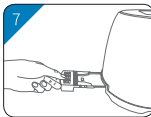
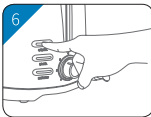
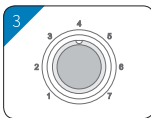
② Carriage Handle

④ Bagel Button

⑥ Defrost Button

⑧ Housing

Features and Benefits



1. Dual Toasting Slots

1½-inch (36mm) slot toasts a wide variety of breads.

2. Carriage Handle

Brings the toast close to the top of the toaster, making it easy to remove items.

3. Browning Control

Rotating dial sets selected shade. 7 browning levels toast from light to dark.

4. Bagel Button

Adds extra time to toasting cycle. LED lights when selected.

5. Defrost Button

Defrosts and toasts frozen bread. LED lights when selected.

6. Cancel Button

Interrupts toasting process.

7. Slide-out Crumb Tray

Pulls out to clean crumbs that collect in bottom of toaster.

8. Cord Storage (not shown)

Takes up excess cord and keeps countertop neat.

Use and Care

Unwind the power cord. Check that the crumb tray is in place and that there is nothing in the toaster slot. Plug power cord into the wall outlet.

1. Insert Slice(s) of Bread.

Be sure that the carriage is in the up position.

2. Set the Browning Control.

Turn rotary dial to the desired position:

Dial Setting Color

1–2 light

3–5 medium

6–7 dark

3. To Begin Toasting.

Press the Carriage Handle until it locks into the down position.

To Stop Cycle.

When the toasting cycle is finished, the toast will be raised. If you wish to stop the cycle before it is finished, simply press the "Cancel" button. After use, unplug the toaster from the electrical outlet.

Some Notes on Browning:

Toasting is a combination of cooking and drying of the bread. Therefore, differences in moisture level from one bread to another can result in varying toasting times.

- For slightly dry bread, use a lower setting than you normally would.
- For very fresh bread or whole wheat bread, use a higher setting than normal.
- Breads with very uneven surfaces (such as English muffins) will require a higher toast setting.
- Thickly cut pieces of bread (including bagels) will take longer to toast, sometimes significantly longer, since more moisture must be evaporated from the bread before toasting can occur. Very thick pieces may require two cycles.
- When toasting raisin or other fruit breads, remove any loose raisins, etc. from the surface of the bread before placing into the toaster. This will help prevent fruit pieces from falling into the toaster or sticking on the guide wires in the slot.
- Before toasting bagels, slice each bagel into two equal halves.
- Single Slice Toasting:

If you are toasting a single slice of bread, set the heat selector to a lighter setting than you normally would. The toaster is designed to heat the whole toasting chamber for two slices. By lowering the heat for a single slice, you won't overtoast.

- Frozen Waffles, Pancakes, French Toast and Frozen Bagels.

These items should be warmed before toasting, using the Defrost function. Select your preferred browning shade. Press Carriage Handle and then select Defrost. For example, when toasting a frozen bagel, press Carriage Handle, select the browning level, then push Bagel button and Defrost.

- Toaster pastries: Exercise caution with toaster pastries; the filling can become quite hot, long before the surface of the pastry becomes browned. Never leave toaster pastries unattended while toasting or warming.

Defrost Button

The "Defrost" button is designed to first defrost and then toast the bread, which extends the toasting cycle slightly.

1. Insert slice(s) of bread. Be sure that the carriage is in the up position.
2. Set the Browning Control.
3. Press the "Defrost" button. BLUE LED indicates feature is activated. To stop cycle: When the defrost cycle is complete, the toaster will raise the bread. If you wish to stop the cycle before it is finished, simply press the "Cancel" button to interrupt. After use, unplug the toaster from the electrical outlet.
4. Press the Carriage Handle until it locks into position.

Bagel Button

The bagel feature adds extra time to the toasting cycle to allow for thicker breads.

1. Insert slice(s) of bread or halved bagels. Be sure that carriage is in the up position.
2. Set the Browning control.
3. Press the Carriage Handle until it locks into position.
4. Press the "Bagel" button. BLUE LED indicates feature is activated.

To stop cycle:

When the bagel cycle is complete, the toaster will raise the bread. If you wish to stop the cycle before it is finished, simply press the cancel button to interrupt. After use, unplug your toaster from the electrical outlet.

Tips:

- Never force foods into the toasting slot. Foods should fit freely between the guide wires.
- Do not place buttered breads in the toaster, as this could create a fire hazard.
- Uneven toasting is usually due to bread slices of uneven thickness.
- After use, unplug your toaster from the electrical outlet.

Cleaning and Maintenance

Always allow the toaster to cool completely before cleaning.

1. Always unplug the toaster from the electrical outlet.
2. Do not use abrasive cleansers. Simply wipe the exterior with a clean damp cloth and dry thoroughly. Apply any cleansing agent to a cloth, not to the toaster, before cleaning.
3. To remove crumbs, slide out the crumb tray and discard crumbs. Wipe clean and replace. Never operate the toaster without the crumb tray in place.
4. To remove any pieces of bread remaining in the toaster, turn the toaster upside down and gently shake. Never insert any hard or sharp instruments into the slot, as this could damage the toaster and cause a safety hazard.
5. Never wrap the cord around the outside of the toaster. Use the cord storage cleats on the underside of the toaster.
6. Any other servicing should be performed by an authorized service representative.

Disposal

This product should not be disposed of with other household wastes. To prevent possible harm to the environment or human health from uncontrollable waste disposal, it should be recycled responsibly.

Warranty

Limited 2-year Warranty

We warrant this product against any defects that are due to faulty material or workmanship of it. This warranty does not include accident or misuse. If the product gets defective within the warranty period, we will replace it free of charge.

Please contact us with your name, address, phone number and order number. Contacting us we will be happy service for you.

This warranty does not include the following situation:

1. Accident, misuse, abuse or alteration of the product.
2. Servicing by unauthorized persons.
3. Use with unauthorized accessories.
4. Connecting it to incorrect current and voltage.
5. Wrapping cord around appliance causing premature wear and breakage.
6. Any other conditions beyond our control.

Customer Service

For FAQ and more information, please contact us. We are glad to be of service.

After-sale Email: warranty@shardor1.com