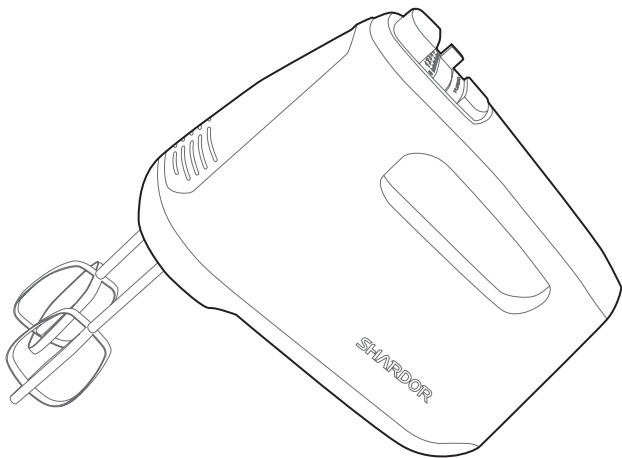


SHARDOR



HM9111A-UL | Hand Mixer

USER MANUAL

CONTENTS

■ Important Safety Instructions	1
■ Specification	2
■ Parts Identification	3
■ Assembly and Disassembly	4
■ Operation	5
■ Cleaning and Maintenance	5
■ Warning	6
■ Troubleshooting	6
■ Disposal	7
■ Warranty	7
■ Customer Service	8

Important Safety Instructions

IMPORTANT SAFEGUARDS

Before using the electrical appliance, the following basic precautions should always be followed including the following:

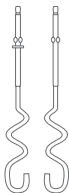
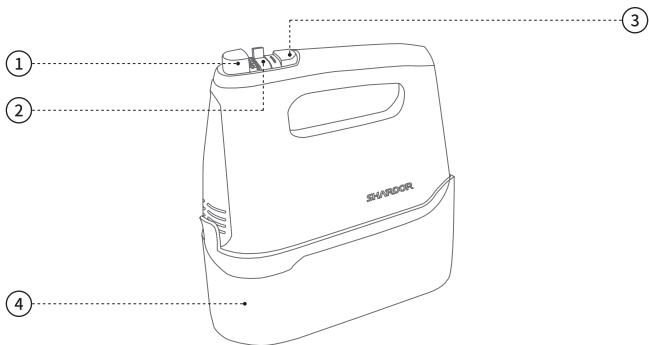
1. Read all instructions.
2. Before using check that the voltage of your wall outlet corresponds to the one on the rating plate which is on the bottom of the appliance.
3. Do not operate any appliance with a damaged cord or plug or after the appliance malfunctions, or is dropped or damaged in any manner. Contact the manufacturer at their customer service telephone number for information on examination, repair, or adjustment.
4. If the supply cord is damaged, it must be replaced by the manufacturer or its service agent in order to avoid an electric shock.
5. Do not let cord hang over edge of table or counter or hot surface.
6. Avoid contacting moving parts. Keep hands, hair, clothing, as well as spatulas and other utensils away from beaters during operation to reduce the risk of injury to persons, and/or damage to the mixer.
7. Do not immerse cord or the body of mixer into water as this would give rise to electric shock.
8. Do not let cord contact hot surface, including the stove.
9. This appliance is not intended for use by persons (including children) with reduced physical, sensory, or mental capabilities, or lack of experience and knowledge, unless they are closely supervised and instructed concerning use of the appliance by a person responsible for their safety. Close supervision is necessary when any appliance is used by or near children. Children should be supervised to ensure that they do not play with the appliance.
10. The use of accessory not recommended by the manufacturer may cause injuries to persons.
11. Do not place an appliance on or near a hot gas or on a heated oven.
12. Never eject beaters/dough hooks when the appliance is in operation.
13. Turn the appliance OFF, then unplug from the outlet when not in use, before assembling or disassembling parts and before cleaning. To unplug, grasp the plug and pull from the outlet. Never pull from the power cord. Permanently Installed – Make sure appliance is OFF when not in use, before putting on or taking off parts, and before cleaning.
14. Ensure fingers are kept well away from moving beaters and dough hooks.
15. Remove beaters from mixer before washing.

16. Switch off the appliance before changing accessories or approaching parts which move in use.
17. Do not operate the appliance for other than its intended use.
18. Do not use outdoors.
- HOUSEHOLD USE ONLY

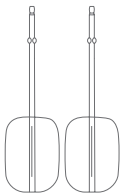
Specification

Brand	SHARDOR
Model	HM9111A-UL
Rated Power	250W
Rated Voltage	120V
Rated Frequency	50/60Hz
Dimensions	8.9×7.3×6.4inch
Color	Black & White

Parts Identification



⑤



⑥



⑦

① Ejector Button

③ Turbo Button

⑤ Dough Hook

⑦ Whisk

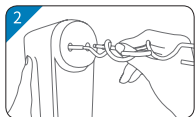
② Speed Selector

④ Storage Case

⑥ Beaters

Assembly and Disassembly

• Tips

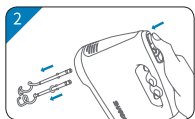


1. Insert the hook with the collar into the left opening. Align and push to lock into place.
2. Insert the accessory without a collar into the right opening. Align and push to lock into place.

• Note

1. Do not install the hooks in wrong holes.
2. An accessory shaft without a collar may be used in either opening. If the dough hooks install reversely, the flour may get into the machine.

• Removing Accessories



1. If the Hand Mixer is running, stop the Hand Mixer by sliding the Power switch to the "0"(Off) position.
2. Press the ejector button to release the accessories from the Hand Mixer, then remove them.

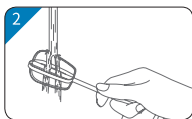
• Note

1. Make sure the speed button at "0" before plug on.
2. It should be allowed to Cool down for 30 seconds after operated for 3 minutes.

Operation

1. Collect all your ingredients together before starting. Choose a mixing bowl that has plenty of room for the mixture.
2. Add the first ingredients to the mixing bowl. Set the OFF/Speed switch to "0" (off).
3. Plug the power cable into a mains outlet.
4. Holding the mixer by the handle, place the beaters or dough hooks into the mixture and gradually increase the mixing speed in the range 1 to 6 until you reach the speed you want.
5. Move the beaters around a little in the mixture to help it circulate. Keep the beaters immersed in the mixture at all times to avoid splashing the mixture from the spinning beaters.
6. If you need to add ingredients or redistribute the mixture in the bowl, switch off the mixer first.

Cleaning and Maintenance



1. Always unplug Hand Mixer before cleaning.
2. Always remove accessories from Hand Mixer before cleaning. Wash in dishwasher, or using warm, soapy water. Rinse and wipe dry.
3. Wipe Hand Mixer with a damp cloth. Dry with a soft cloth.

Warning

1. Any engine disassembly, repair should be executed by qualified technician.
2. This appliance shall not be used by children. Keep the appliance and its cord out of reach of children.
3. Do not plug on/off with wet hands.
4. Do not wet the appliance or put it into water.
5. Finger, clothes, fur or hair should be away from the rotating parts when the appliance is working.
6. A beater and a hook are not allowed to use together.
7. The appliance must be powered off before any assembly and disassembly.
8. Make sure every part is firmly fixed before powering on.
9. If the wire or power cord is damaged, please sent the appliance to factory or service centre.
10. This appliance is for household use only.
11. Children shall not play with the appliance.

Troubleshooting

If Hand Mixer malfunctions or fails to operate: First try the solutions suggested here and possibly avoid the cost of service.

1. Is the Hand Mixer plugged in?
2. Dough hooks installed mistakenly?
3. The ingredients are excessive?
4. Whether the motor is damaged?
5. Try unplugging the Hand Mixer, then plug it back in.

If the problem cannot be fixed with the steps provided in this section, see "Warranty and Customer Service" section.

Disposal

This product should not be disposed of with other household wastes. To prevent possible harm to the environment or human health from uncontrollable waste disposal, it should be recycled responsibly.

Warranty

Limited 2-year Warranty

We warrant this product against any defects that are due to faulty material or workmanship of it. This warranty does not include accident or misuse. If the product gets defective within the warranty period, we will replace it free of charge.

Please contact us with your name, address, phone number and order number. Contacting us we will be happy service for you.

This warranty does not include the following situation:

1. Accident, misuse, abuse or alteration of the product.
2. Servicing by unauthorized persons.
3. Use with unauthorized accessories.
4. Connecting it to incorrect current and voltage.
5. Wrapping cord around appliance causing premature wear and breakage.
6. Any other conditions beyond our control.

Customer Service

For FAQ and more information, please contact us. We are glad to be of service.

After-sale Email: warranty@shardor1.com