

# SHARDOR



## CG638B | Coffee Grinder

USER MANUAL

# CONTENTS

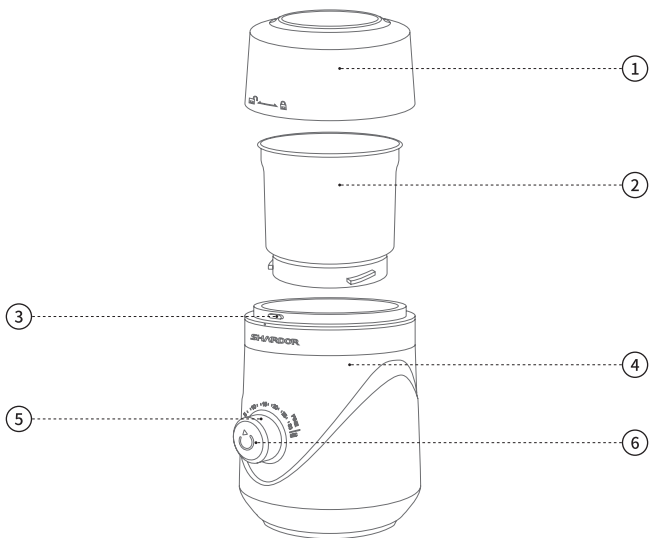
■ Important Safety Instructions .....	1
■ Parts Identification .....	2
■ Specification .....	3
■ Using the Coffee Grinder .....	3
■ Remove & Assemble Grinding Bowl .....	4
■ Cleaning and Maintenance .....	5
■ Disposal .....	5
■ Warranty .....	6
■ Customer Service .....	6

# Important Safety Instructions

Basic safety precautions should be followed when using this product, especially when children are present. Read all instructions carefully before using this product:

1. Read all instructions carefully before using this product.
2. Basic safety precautions should always be followed when using electrical products, especially when children are present.
3. **WARNING:** To avoid the risk of electrical shock, always make sure the product is unplugged from the electrical outlet before relocating, servicing, or cleaning it.
4. This product is intended for grinding coffee beans to brew coffee for human consumption.
5. Do not use the product for any other purpose.
6. Keep the product out of the reach of children and pets. This product is not intended for use by children.
7. Do not leave the product unattended while in use. Always unplug the product from the electrical outlet when not in use.
8. Always place the product on a flat, steady, stable surface.
9. Keep the Power Cord and product away from heated surface.
10. Do not place this product in or expose it to water or other liquids.
11. Do not use attachments not recommended or sold by the product manufacturer as a risk of fire, electrical shock, or serious personal injury may result.
12. To avoid the risk of serious personal injury or damage to the product, keep hands, hair, other body parts, clothing, and utensils away from the grinding blades while operating the product.
13. Plug the product into a standard 120V AC electrical outlet.
14. Do not plug or unplug the product into/from the electrical outlet with a wet hand.
15. Do not allow the Power Cord to hang (over the edge of a table or counter) where it tripped over or pulled.
16. Unplug the product from the electrical outlet prior to putting on or removing parts.

# Parts Identification



① Transparent Lid

③ Safety Lock

⑤ Timing Knob

② Removable Grinding Chamber

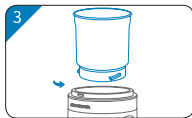
④ Motor Housing

⑥ Switch Button

# Specification

Brand	SHARDOR
Model	CG638B
Rated Power	150W
Rated Voltage	US120V
Capacity	70g
Dimensions	210x110x120mm
Color	Black

## Using the Coffee Grinder



### Operation:

1. Take off the lid and put some coffee bean into the bowl. Make sure that the bowl is locked on the base.
2. Plug in and set the time by rotating the timing knob, then turn the switch on. The time you choose will decide how fine the powder would be. You can stop at any time to check the powder and continue grinding it until you get what you want.
3. Switch the bowl counterclockwise to remove it and transfer the powder with a brush.

### NOTE:

1. When using for the first time, please clean all the attachments of the appliance with a damp cloth.
2. Unplug it after using or before cleaning.

### Caution:

1. When using for the first time little smell might occur. This is harmless and smell will disappear after a while.
2. The blade is very sharp! Keep your fingers, hair and cloth away from the sharp blades! Do not touch the blades while cleaning or removing it.
3. The coffee grinder would not work until the grinding bowl is steadily locked on the base. Switch the bowl counterclockwise to remove it, clockwise to lock it.
4. This appliance is intended for short term operation. After 30 seconds of operation let it cool down for at least 30 seconds to avoid overheating. After three times of operation in sequence, please stop and let the motor cool down for 30 minutes.

## Remove & Assemble Grinding Bowl



The grinding bowl is detachable.

1. When the grinding bowl is fixed to the base, hold the bowl and turn it counterclockwise. When you hear a click, lift it up then you can remove the grinding bowl successfully.
2. Place the grinding bowl into the base:  
Hold the bowl, and turn it clockwise. When you hear a click, it indicates that the grinding bowl has been successfully locked and the installation is completed.

# Cleaning and Maintenance

Remember to clean your coffee grinder before using it for the first time. Then, to ensure optimal mill function and durability, clean it regularly following these simple steps:

1. Always unplug your coffee grinder after use and before cleaning.
2. Wash the grinder bowl with warm soapy water. (Never use abrasive cleaners, steel wool pads or other abrasive materials.)
3. Wipe clean the inside of the grinding chamber and motor housing with a soft, damp cloth-then thoroughly dry them.
4. Wipe the exterior of the appliance with a soft, damp cloth.

## CAUTION!

1. Never immerse the motor housing in water, in any other liquid or place in the dishwasher.
2. Store the unit in a dry safe place.

# Disposal

This product should not be disposed of with other household wastes. To prevent possible harm to the environment or human health from uncontrollable waste disposal, it should be recycled responsibly.

# Warranty

## Limited 2-year Warranty

We warrant this product against any defects that are due to faulty material or workmanship of it. This warranty does not include accident or misuse. If the product gets defective within the warranty period, we will replace it free of charge.

Please contact us with your name, address, phone number and order number. Please contact us and we will be happy to serve for you.

## This warranty does not include the following situation:

1. Accident, misuse, abuse or alteration of the product.
2. Servicing by unauthorized persons.
3. Using with unauthorized accessories.
4. Connecting it to incorrect current and voltage.
5. Wrapping cord around appliance causing premature wear and breakage.
6. Any other conditions beyond our control.

# Customer Service

For FAQ and more information, please contact us. We are glad to be of service.

After-sale Email: [warranty@shardor1.com](mailto:warranty@shardor1.com)