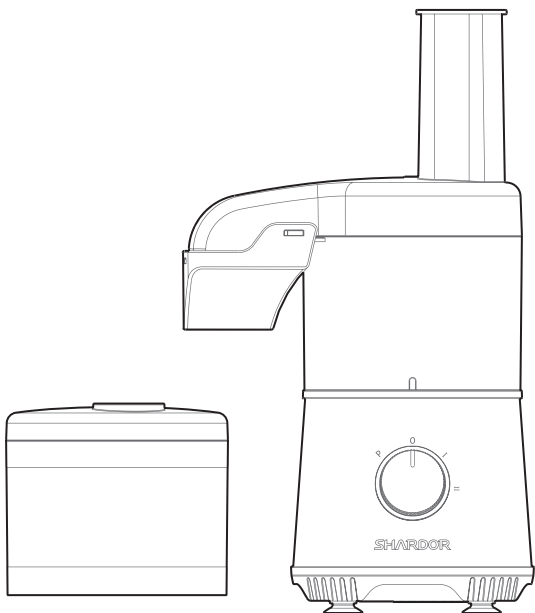


SHARDOR



FP818S | Food Processor

USER MANUAL

CONTENTS

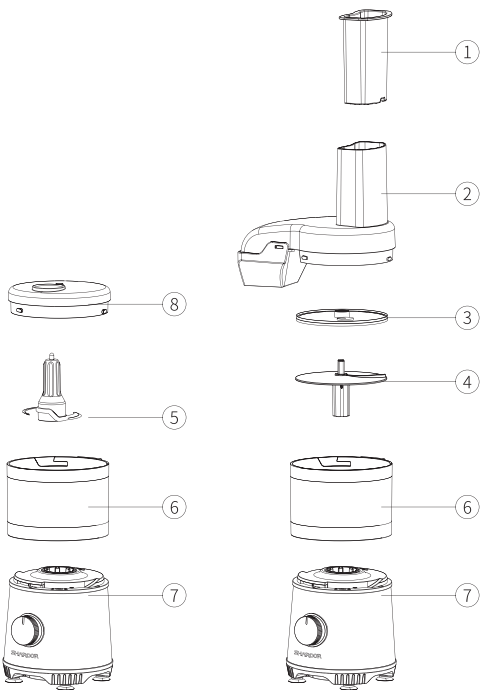
■ Important Safety Instructions	1
■ Parts Identification	2
■ Specification	3
■ Assembly	4
■ Operation	5
■ Mode	6
■ Cleaning and Maintenance	6
■ Analysis of Work Improperly	7
■ Disposal	8
■ Warranty	9
■ Customer Service	9

Important Safety Instructions

Basic safety precautions should be followed when using this products, especially when children are present. Including the following. Read all instructions carefully before using this product.

1. To avoid the risk of electric current, make sure the product is unplugged before relocating, servicing, or cleaning it.
2. DO NOT use the product for any other purpose.
3. Keep the product out of the reach of children.
4. DO NOT leave the product unattended while in use.
5. Always unplug the product when not in use.
6. Always place the product on a flat, steady, stable surface.
7. Keep the product away from heated surfaces.
8. DO NOT place this product in water or other acid corrosive liquids.
9. DO NOT use attachments not recommended.
10. To avoid the risk of serious personal injury or damage to the product, keep hands, hair, clothing, and utensils away from the blades, whilst operating the product.
11. Plug the product into a matching electrical outlet.
12. Never plug in the product into an electrical outlet unless it is completely assembled and the lid is securely in place.
13. Before removing the Lid, unplug the product from the electrical outlet, and make sure the blades have stopped.
14. Do not plug or unplug the product into/from the electrical outlet with wet hands.
15. This product is intended for indoor, non-commercial, household use only.

Parts Identification



- ① Pusher
- ② Feed Chute
- ③ Reversible stainless-steel disc
- ④ Plastics Flange

- ⑤ Stainless-steel S-Blade
- ⑥ Plastics Bowl
- ⑦ Motor Housing
- ⑧ Plastics Lid

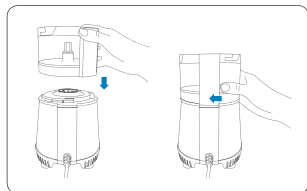
Specification

Model	FP818S
Rated Power	350W
Rated Voltage	US120V
Rated Frequency	60Hz
Capacity	3.5-cup(0.5L)
Blade Material	Stainless Steel
Switch	One-touch Switch
Net Weight	1.5kg(1465g)

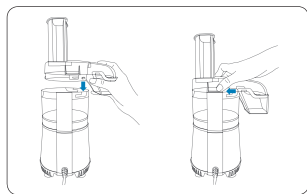
Assembly

Before using the food processor for the first time, thoroughly clean the container, the Lid, the feed chute with the pusher and the Motor Housing(Reference the " Cleaning and Maintenance" section),then thoroughly dry them.

Remove any other dopants from the plastic bowl and feed chute before each use.



1. Install the plastic bowl firmly on the motor and turn clockwise until the container is fully fitted, as the picture shows:(Note: Unless the bowl is fully fitted, the food processor will not work or work with safety)



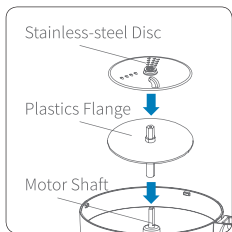
2. Cover the plastic lid to the plastic bowl and make sure the gap in the plastic bowl perfectly matched with the plastic lid.

3. Put food into the machine to process. (Capacity of food can not beyond the scale line or it would spill out while blending.)

Note:

1. The Feed chute has a capacity of 1cup (0.15L).
2. The Container has a capacity of 3.5-cup (0.5L).

Operation



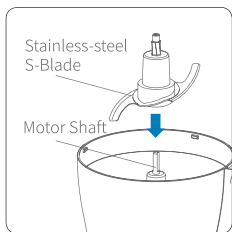
Processing of Using Reversible stainless-steel disc

Reversible stainless-steel disc can be used for shredding and slicing

- Slicing blade is provided on one side, which has a slicing function; the back has a cutting function. When installing and using, put the required function face up.

1. Make sure turn the switch to OFF (O) and unplug the power plug.
2. Lock the cooking bowl on the base. (Refer to "Assembly" on page 5.)
3. Place the side you need upward on the plastic receiving plate in the cooking bowl.

4. Assemble the equipment and ensure that the feed trough and cooking bowl are clean.
5. Put the ingredients into the feed chute trough through the pusher.
6. Plug into the power outlet.
7. Select the gear you need.
8. Turn the switch on.
9. After it is completed, turn to OFF (O), and remove the cover until the blade stops rotating, unplug the power plug.



Processing of Using Stainless-steel S-Blade Blade

Stainless-steel S-Blade Blade can be used for chopping, mixing and making puree.

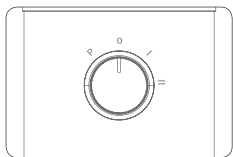
1. Make sure turn the switch to OFF (O) and unplug the power plug.
2. Lock the cooking bowl on the base. (Refer to "Assembly" on page 5.)
3. Place the S-shaped blade on the motor shaft in the center of the cooking bowl. (Caution: The blade is sharp, operate with caution)
4. Assemble the equipment and ensure that the feed trough and cooking bowl are clean.

5. Put the ingredients into the cooking bowl and fasten the lid.
6. Plug into the power outlet.
7. Select the gear you need.
8. Turn the switch on.
9. After it is completed, turn to OFF (O), and remove the cover until the blade stops rotating, unplug the power plug.

Note:

1. When not using the machine or leaving it unattended, unplug the machine from the power outlet.
2. If you want to shredding or slicing cheese, please choose hard cheese such as cheddar cheese. And put it in the refrigerator for 30 minutes before processing.
3. Do not puree or mashed starchy food which is easily over-treatment like potatoes.

Mode

**ON/OFF**

O: OFF

I: Low gear

II: High gear

P(Pulse): Acceleration setting

Cleaning and Maintenance

In the daily use of food processor, it needs to be cleaned and maintained regularly. Not only for using it better, but also helps to extend the life of it.

1. Before cleaning the product, make sure that the plug has been unplugged.
2. After using, put in proper amount of water and turn it on for about 15 seconds to remove food impurities on the knife. Wash immediately after use. Rinse the plastic lid, plastic bowl and other parts with water.
DO NOT use corrosive cleaning products.
Wipe the motor housing with a clean damp cloth.

3. After processing, Removing the plastic bowl from the host after the blade rotation stopped completely.
4. Please do not put the overheated food into the plastic bowl, so as not to cause deformation of it.
6. It is strictly forbidden that immerse the motor in water for cleaning.
7. Do not run empty (when there is no food) or overload (the amount is more than 2/3 of the capacity), run the machine.

Analysis of Work Improperly

- **Possible reasons and solutions for food processor not working:**

1. The rotary switch did not rotate to the specified position.
2. The power cord is not plugged in.

- **Possible reasons and solutions for blade rust:**

Long-term storage of liquids, especially acidic juices, may cause the blade rust. The key to avoiding blade rust is cleaning timely.

- **Possible reasons and solutions for the noise of food processor:**

For the machine processes food by rotating the blade at high speed, the blade and the ingredients impact each other. Noise is normal phenomenon.

1. Too much noise while using——Bearing lubricating oil is exhausted, lubricating oil can be added to the bearing.
2. Idling noise——Probably because the assembly is not in place, turn off the power, remove and reinstall the bowl and the motor.

- **Possible reasons and solutions for the motor overheating:**

1. Put too much food, the load is too heavy——Reduce appropriately.
2. The voltage is too high——Using while the voltage is normal.
3. No load or overload——Using according to the instructions.

- **Possible reasons and solutions for motor smoke while using:**

1. Depends the wet weather, the smoke is caused by the moisture evaporation in the motor——This phenomenon will disappear after the moisture evaporated for a while.
2. When smoke comes with fire, it may burn the motor——Contact with after-sale for testing and maintenance.

- **Possible reasons and solutions for blade weak rotation:**

1. Power supply voltage is too low——Using while the voltage is normal.
2. Poor contact between power plug and socket——Reinsert.
3. Motor short circuit or turn-off——Contact with after-sale for testing and maintenance.

- **Possible reasons and solutions for the shaking of the base:**

1. Placed improperly——Change the position and keep it flat.
2. The fastening screws of the motor and base are not tightened——Tightened the Screws.
3. The shaft of the motor is deformed, causing sway when the tool rotates.——Contact with after-sale for testing and maintenance.

Disposal

This product should not be disposed of with other household wastes. To prevent possible harm to the environment or human health from uncontrollable waste disposal, it should be recycled responsibly.

Warranty

Limited 12-month Warranty

We warrant this product against any defects that are due to faulty material or workmanship of it. This warranty does not include accident or misuse. If the product gets defective within the warranty period, we will replace it free of charge.

Please contact us and attach the sales receipt with your name, address, phone number and order number. Contacting us we will be happy to serve you.

This warranty does not include following situation:

1. Accident, misuse, abuse or alteration of the product.
2. Servicing by unauthorized persons.
3. Use with unauthorized accessories.
4. Connecting it to incorrect current and voltage.
5. Wrapping cord around appliance causing premature wear and breakage.
6. Any other conditions beyond our control.

Customer Service

For FAQ and more information, please contact us. We are glad to be of service.

After-sale Email: warranty@shardor1.com