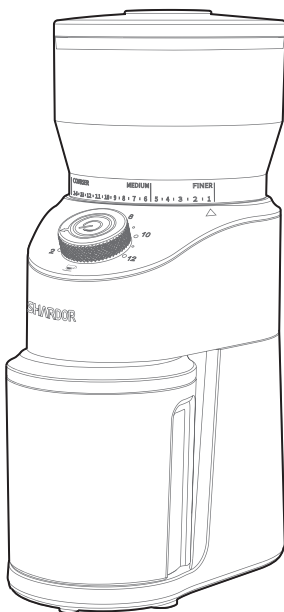


SHARDOR



CG845B | Coffee Grinder

USER MANUAL

CONTENTS

■ Important Safety Instructions	1
■ Features and Benefits	2
■ Parts Identification	3
■ Specification	4
■ Assembly	4
■ How to Use the Coffee Grinder	5
■ Grind Settings	6
■ Troubleshooting	7
■ Cleaning and Maintenance	8
■ Disposal	8
■ Warranty	9
■ Customer Service	9

Important Safety Instructions

Basic safety precautions should be followed when using this product, especially when children are present. Read all instructions carefully before using this product:

1. Read all instructions carefully before using this product.
2. Basic safety precautions should always be followed when using electrical products, especially when children are present.
3. **WARNING:** To avoid the risk of electrical shock, always make sure the product is unplugged from the electrical outlet before relocating, servicing, or cleaning it.
4. This product is intended for grinding coffee beans to brew coffee for human consumption.
5. Do not use the product for any other purpose.
6. Keep the product out of the reach of children and pets. This product is not intended for use by children.
7. Do not leave the product unattended while in use. Always unplug the product from the electrical outlet when not in use.
8. Always place the product on a flat, steady, stable surface.
9. Keep the Power Cord and product away from heated surface.
10. Do not place this product in or expose it to water or other liquids.
11. Do not use attachments not recommended or sold by the product manufacturer as a risk of fire, electrical shock, or serious personal injury may result.
12. To avoid the risk of serious personal injury or damage to the product, keep hands, hair, other body parts, clothing, and utensils away from the grinding blades while operating the product.
13. Plug the product into a standard 120V AC electrical outlet.
14. Do not plug or unplug the product into/from the electrical outlet with a wet hand.
15. Do not allow the Power Cord to hang (over the edge of a table or counter) where it tripped over or pulled.
16. Unplug the product from the electrical outlet prior to putting on or removing parts.

WARNING!

To reduce the risk of fire or electric shock, do not remove any service covers. There are no user serviceable parts inside the Conical Burr.

Only authorized personnel should repair the Conical Burr.

Please read ALL of the instructions in this manual carefully before you begin to use this appliance. Proper care and maintenance will ensure a long life and a trouble-free operation for this appliance. Please save these instructions and refer to them for cleaning and care tips.

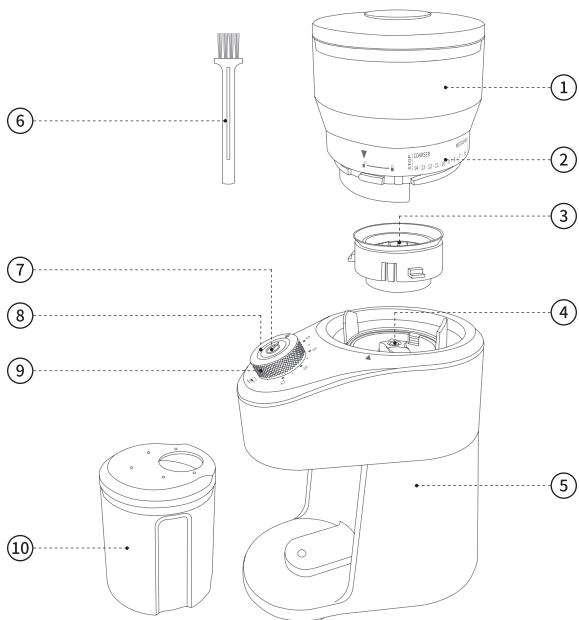
Features and Benefits

Shardor Conical Burr Features and Benefits:

1. Whole Bean Hopper - Removable and easy to clean bean hopper holds up to 8.8oz of coffee beans at a time.
2. 14 Grind Slide Dial - Choose from 14 different grind selections from fine(Espresso Grade) to course (French Press Grade) for your customized brewing method.
3. Cup Selector - Perfect portions every time with automatic grind settings from 2-12 cups.
4. Automatic Shut-Off - Eliminates the guesswork by automatically stopping at the desired portion chosen.
5. Removable Ground Coffee Chamber - Lets you easily transfer ground coffee.
6. Indicator Light - LED illuminates letting you know your Burr is ready for use.
7. With Cleaning Brush - Makes clean up easy.



Parts Identification



- ① Bean Hopper
- ③ Removable Ring Burr
- ⑤ Motor Housing
- ⑦ On/Off Button
- ⑨ Cup Selector

- ② Grind Slide Dial
- ④ Center Cone Burr
- ⑥ Cleaning Brush
- ⑧ Indicator Light
- ⑩ Grinding Chamber

Specification

Model	CG845B
Rated Power	200W
Net Weight	3.65lb=1.66kg
Rated Voltage	US120V
Bean Hopper Capacity	250g/8.8oz
Grinding Chamber Capacity	95g/3.35oz
Dimensions	226*170*330mm (8.9*6.7*13in)

Assembly

Always clean your coffee grinder before using the first time.

Make sure that your first cup of coffee is as good as can be by cleaning your machine before its first use. Just follow these simple steps:

1. Wash the Bean Hopper and Grinding Chamber parts with warm soapy water. (Never use abrasive cleaners, steel wool pads or other abrasive materials. UNIT IS NOT DISHWASHER SAFE).

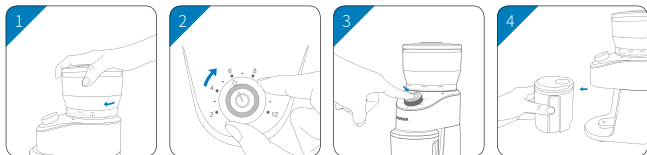
CAUTION: Never immerse the motor housing into water or any other liquid or place in the dishwasher.

2. Dry thoroughly.
3. Install the Bean Hopper onto the unit and turn clockwise (until it clicks into place)(Fig.1/Fig.2)
4. Please put Grinding Chamber Lid back on Grinding Chamber and then install into unit, tightly locking into place. (Fig.3/Fig.4)

NOTE: If Bean Hopper and Grinding Chamber are not tightly in place correctly, the safety switches within the machine will not allow the grinder to work. You MUST have all parts in place to safely use it.



How to Use the Coffee Grinder



NOTE: Before using the coffee grinder for the first time, thoroughly clean the Bean Hopper Lid, Bean Hopper, motor housing, Grinding Chamber Lid, and the Grinding Chamber. Then thoroughly dry them. Remove any other objects or debris from the Grinding Chamber and Bean Hopper before each use.

1. Make sure the Bean Hopper is clean, and pour the whole coffee beans into the Bean Hopper.

NOTE: The Bean Hopper has a capacity of 250g(8.8oz). Do not fill the coffee grinder beyond the brim of the hopper.

2. Securely attach the Bean Hopper and Grinding Chamber into the motor housing by gently putting down and turning it to the lock position. Make sure the coffee Grinding Chamber is in place.

NOTE: The Grinding Chamber has a capacity of 95g(3.35oz). Do not fill the ground coffee beyond the max line of the Grinding Chamber.

3. Plug the appliance into a outlet.
4. Set the Grind Slide Dial to the desired amount of grounds.(Fig.1)
(See page 11 for grind size guide.)

5. Turn the Cup Selector to the amount of cups you wish to grind.(Fig.2)
6. Press and hold briefly the button to start the grinding process.

7. The unit will automatically stop when the selected volume has been reached.

NOTE: You may also stop the grinding process at anytime by pressing the button again.

8. Start the grinding process by pressing the button.(Fig.3)
9. To remove the grinds-side the Grinding Chamber outward and remove the lid.(Fig.4)

Grind Settings

COARSER	MEDIUM	FINER
14 13 12 11 10 9 8 7 6	5 4 3 2 1	

There are a total of 14 grind settings. They are subdivided to COARSE, MEDIUM and FINE. We are confident that you will find the proper setting for your coffee preparation.

Our general recommendations are:

COARSE:

- French Press Coffee Makers.
- Percolators.

MEDIUM:

- Steam Boiler Espresso Machines.
- Drip Coffee Makers.

FINE:

- Espresso Pump Machines.
- Fully Automatic Coffee Centers (when using ground coffee).
- Stovetop Mocha Machines.
- Manual Filters with Manual Brewing.
- Some Espresso Pump Machines.
- Manual Preparation of Turkish Coffee.

Troubleshooting

Possible reasons and solutions for Coffee grinder not working:

1. The safety lock did not rotate to the specified position.
Install the Bean Hopper onto the unit and turn clockwise (several rotations- will hear clicking as unit gets tighter) until it stops with the grind size indicator on Fine.
2. The power cord is not plugged in.
Make sure the power cord is plugged in.

Possible reasons and solutions for the noise of Coffee Grinder:

1. For the machine works by rotating at high speed, the burrs and the ingredients impact each other.Noise is normal phenomenon.
2. Probably for the assembly is not in place, turn off the switch, remove and reinstall.

Possible reasons and solutions for the shaking:

1. Placed improperly.
2. Change the position and keep it flat.

Cleaning and Maintenance

Remember to clean your coffee grinder before using it for the first time. Then, to ensure optimal mill function and durability, clean it regularly following these simple steps:

1. Always unplug your Coffee Grinder after use and before cleaning.
2. Wash the Bean Hopper and Coffee Chamber parts with warm soapy water. (Never use abrasive cleaners, steel wool pads or other abrasive materials. UNIT IS NOT DISHWASHER SAFE)
3. Wipe clean the inside of the Grinding Chamber and Motor Housing with a soft, damp cloth-then thoroughly dry them.
4. Wipe the exterior of the appliance with a soft, damp cloth.
5. Rinse the Grinding Chamber with warm water and dry thoroughly.

CAUTION!

1. Never immerse the Motor Housing in water, in any other liquid or place in the dishwasher.
2. DO NOT oil or sharpen the burrs.

Disposal

This product should not be disposed of with other household wastes. To prevent possible harm to the environment or human health from uncontrollable waste disposal, it should be recycled responsibly.

Warranty

Limited 2-year Warranty

We warrant this product against any defects that are due to faulty material or workmanship of it. This warranty does not include accident or misuse. If the product gets defective within the warranty period, we will replace it free of charge.

Please contact us and attach the sales receipt with your name, address, phone number and order number. Contacting us we will be happy service for you.

This warranty does not include the following situation:

1. Accident, misuse, abuse or alteration of the product.
2. Servicing by unauthorized persons.
3. Use with unauthorized accessories.
4. Connecting it to incorrect current and voltage.
5. Wrapping cord around appliance causing premature wear and breakage.
6. Any other conditions beyond our control.

Customer Service

For FAQ and more information, please contact us. We are glad to be of service.

After-sale Email: warranty@shardor1.com