

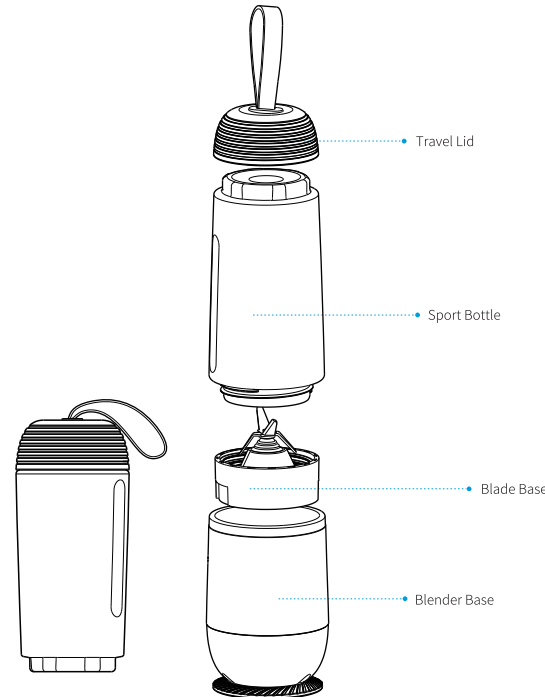
PB515B | Portable Blender

Important Safety Instructions

When using an electrical appliance, basic precautions should always be observed, including the following. Read all instructions before using this appliance.

- **WARNING**
In order to avoid the harm caused by misuse, please read the instruction manual carefully before using this product. Meanwhile, please use the product strictly according to the specified instructions in the manual.

Parts and installation drawings

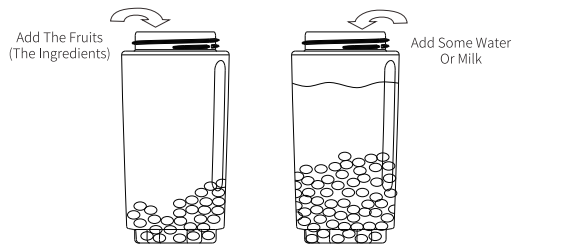


Note: The above product images are for reference only, the specific product appearance and color are subject to the actual product.

Main features

1. The product is exquisite in design and stylish in appearance.
2. The blender base and the sport bottle are separately designed, easy to disassemble and clean.
3. The sport bottle comes with a travel lid to facilitate carrying out.
4. The lid comes with a portable silicone rope, easy to carry out.
5. FJ515S has 4 stainless steel blade with super hardness and corrosion resistance which makes the blender life lasts longer.

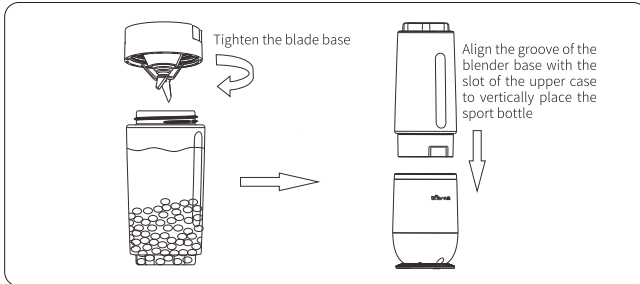
Instructions



1. Peel the fruits into small pieces and remove the fruit core.
2. Add fruit and a moderate amount of drinking water or milk to the blender.

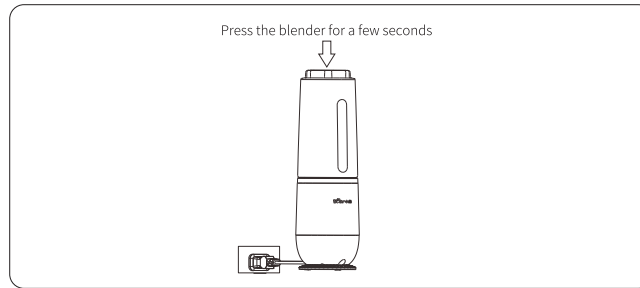
The proportion of ingredients is as follows:

Ingredients (g)	Water(g)	Capacity (ml)
140	210	350
120	180	300



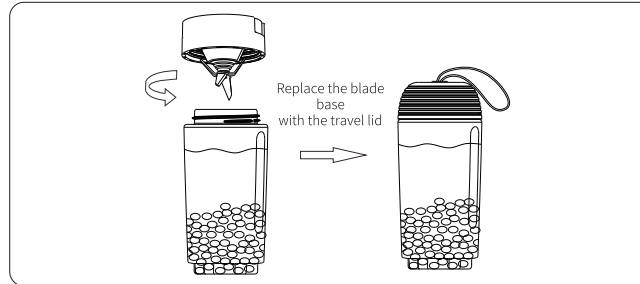
3. Tighten the blade base and sport bottle, then align the groove of the blender base with the slot of the upper case to vertically place the sport bottle.

- **Note**
It is necessary to add liquid when you use the blender to mix the fruits. Besides, the amount of ingredients should not exceed the maximum capacity scale, and the ratio of food to water is 2:3.



Note: Each working time must not exceed 1 minute.

4. Plug in the power plug, press the blender for 19 seconds, listen, and press the blender for another 10 seconds (multiple pressing according to the effect)



5. After the food processing finishes and the blades stop rotating, pull out the power plug, then remove the blender, replace the blade base with the travel lid, and then take the sport bottle to travel.

Safety Precautions

Please read the safety precautions carefully before use and use the blender in the correct way. Please keep the instructions in a safe place after reading them so that users of this product can check them at any time.

1. The input voltage of this product is 110V, please confirm it before use.
2. The machine must be placed on a stable desk.
3. Before turning on the power, please be sure to install the detachable parts such as the blade base, sport bottle and the blender base in place.
4. It is forbidden to use the machine without water, so as to prevent the local high temperature caused by high rotation speed from burning the waterproof sealing ring.
5. After processing, please wait for the motor and the blade to stop rotating, and make sure to remove the stirring part after disconnecting the power supply.
6. Be sure to disconnect the power before disassembling or moving any parts of the product.
7. Avoid contact with moving parts such as blades and motors during product operation to protect yourself from injury or damage caused by the blender, especially the elderly and children.
8. If the power cord is damaged, in order to avoid danger, it must be replaced by the manufacturer or its maintenance department or a similar professional. Do not disassemble and repair it yourself to avoid danger.
9. If the product needs to be repaired during use, please contact the after-sales service department of the company, or go directly to the repair shop designated by the company for repair. Do not disassemble it yourself to avoid danger.
10. Check the plug, power cord, mixing cup and other parts for damage before use. If damage is found, please stop using the product and contact the after-sales service department of the company in time. Do not disassemble it yourself to avoid danger.
11. Do not immerse the main unit in water or other liquids, or rinse the unit under water or other liquids.
12. Never use steel balls, abrasive cleaners or corrosive liquids such as benzene or acetone to clean the product.
13. The product should be stored in a place that is unreachable for children. Do not let people (including children) who are not physically fit, feel or mentally impaired, or lack relevant experience and knowledge to operate the product.
14. When the machine is not in use for a long time, please unplug it and wipe it clean and place it in a cool dry place.
15. This product is for home use only.
16. The machine blade is sharp. So please pay attention to it when removing the blade, emptying the mixing bowl and cleaning.

Maintenance

17. If the machine is stuck in food during use, turn off the power, remove the blade base, and clean the jammed food.
18. The temperature range of the glass is: 0 °C - 100 °C. It is strictly forbidden to put the glass into something beyond its temperature tolerance.
19. Do not put overheated ingredients or liquid (≥ 80 °C) in the cup to avoid bursting, splashing and scalding.

1. After use, please unplug the power plug from the power outlet.
2. Always disconnect the power supply before cleaning the product.
3. The sport bottle and blade base can be rinsed directly with clean water.
4. The outside of the blender base can be wiped with a wet towel. Do not immerse the blender base in water or other liquids, or rinse it with water or other liquids.
5. After use, please clean the sport bottle and blade base in a timely manner, and then dry them after washing.
6. This product should be stored in a dry place to avoid direct ultraviolet radiation.
7. Before storing the product, make sure the product is clean and dry.

Analysis of common problems

Problem	Cause Analysis	Troubleshooting
Does not work after power on	Check if the cup and the holder are tightened.	Tighten the cup and the holder.
A bad smell when using the motor several times	It is a normal situation for the first few usage.	If there are still unpleasant smells after repeated use, please send them to the maintenance location for inspection.
Mixing cup leaking	Check if the cup and the holder are tightened, the cup is broken, or if forgetting install the sealing ring	Tighten the cup and the holder, place the sealing ring and keep it steady.

- **Note**
If the fault cannot be eliminated through the above phenomenon analysis, please contact our maintenance location or dealer. It is strictly forbidden for non-professionals to disassemble the machine.

Specifications

Product Name	FJ515S
Rated Voltage	110V
Rated Frequency	50HZ
Rated Power	150W
Rotating Speed	16000rpm-19000rpm
Dimensions (length*width*height)	77*77*263 (mm)
Rated Capacity	350ml
Picture	

Details

This product and food contact materials meet the relevant food safety standards		
Part Name	Material	Standard
Travel Lid	Acrylonitrile Butadiene Styrene Copolymers(ABS)	GB4806.7-2016
Blade Base	Polypropylene(PP)	GB4806.7-2016
Mixing Cup	Dimethyl Terephthalate and 1,4-Cyclohexane Dimethanol,2,2,4,4 Dimethyl-1,3-Cyclobutanediol Polymer	GB4806.7-2016
Sport Bottle	High borosilicate glass	GB4806.5-2016
Bearing Bracket / Mixing Knife Shaft	Stainless Steel06 Cr19Ni10(SUS304)	GB4806.9-2016
Blase	Cr19Ni10(SUS304)	GB4806.11-2016
Sealing Ring	Polydimethylsiloxane (Silicone Rubber)	GB4806.11-2016
Tips: The food contact parts and materials used in different models may be different, please refer to the actual purchase model.		
Conditions of Use: Prevent the stainless steel parts to avoid contact with strong acidic substances.		

Environmental instructions

- This product meets the requirements of the Administrative Measures for the Restriction of the Use of Hazardous Substances in Electrical and Electronic Products.
- During the period of environmental protection use, there are no harmful substance leakage, precipitation and other problems affecting consumers' health during normal use, so you can use it with confidence.
- The environmental protection period of our products is 10 years. Only when the products are used under the normal conditions described in this manual, the "Environmental Use Period" is valid.

Name and content of harmful substances in the products						
Part Name	Harmful Substance					
	Lead (Pb)	Mercury (Hg)	Cadmium (Cd)	Hexavalent Chromium (Cr (VI))	Polybrominated Biphenyl (PBB)	Polybrominated Diphenyl Ether (PBDE)
Plastic component	○	○	○	○	○	○
Board assembly	x	○	○	○	○	○
Hardware components	○	○	○	○	○	○
Container	○	○	○	○	○	○
Motor assembly	x	○	○	○	○	○
Power cable	x	○	○	○	○	○

This form is made in accordance with the provisions of SJ/T 11364
○: Indicates that the content of the hazardous substance in the homogeneous material of the part is below the limit requirement specified in GB/T 26572.
x: Indicates that the hazardous substance is at least in a homogeneous material of the part exceeding the limit requirement of GB/T 26572.
Remarks: Some of the above-mentioned parts marked "x" contain harmful substances exceeding the standard because of the current technical level of the industry, and it is temporarily impossible to replace or reduce.

Disposal



This product should not be disposed with other household wastes. To prevent possible harm to the environment or human health from uncontrolled waste disposal, you should recycle it responsibly to promote the sustainable reuse of material resources. Please use the return and collection systems or contact the retailer where the product was purchased to dispose your used product. They can take this product for environmental safe recycling.

Warranty

- **Limited 12-month Warranty**
We warrants this product against any defects that are due to faulty material or workmanship for the life of the product. This warranty does not include damage to the product resulting from accident or misuse. If the product should become defective within the warranty period, we will replace it free of charge.
Please contact us and attach your name, address, phone number and order number.
For contacting us, Please see the Customer Service Section. We will be happy to your service.

This warranty does not cover products damaged by the following:
1.Accident, misuse, abuse or alteration of the product.
2.Servicing by unauthorized persons.
3.Use with unauthorized accessories.
4.Connecting it to incorrect current and voltage.
5.Wrapping cord around appliance causing premature wear and breakage.
6.Any other conditions beyond our control.

Customer Service

For FAQ and more information, Please contact us. We will be happy to your service.

After-sale Email: warranty@shardor1.com